



ITU NATIONAL FEDERATION REPORT 2018 ASSESSMENT

LIECHTENSTEIN TRIATHLON FEDERATION

ITU National Federation Services & Development

Table of Contents

Assessed National Federation.....	3
National Federation Survey.....	3
National Federation Profile Diagram.....	3
Concerns regarding the submitted survey	4
Administration Management & Governance	4
Gender Equity	4
Anti-Doping.....	4
Development	4
Athletes.....	4
Coaches.....	4
Technical Officials & Events.....	4
Marketing, Media & Communication	4
Overview of the ITU National Federation (Classification) Report 2018.....	5
1. INDICATORS	5
3. Two METHODS of data collection.....	6
4. National Federation PARTICIPATION	6
5. ITU National Federation GROUPS	7

Attachment

The 2018 survey submission of *Liechtenstein Triathlon Federation* (for future reference).

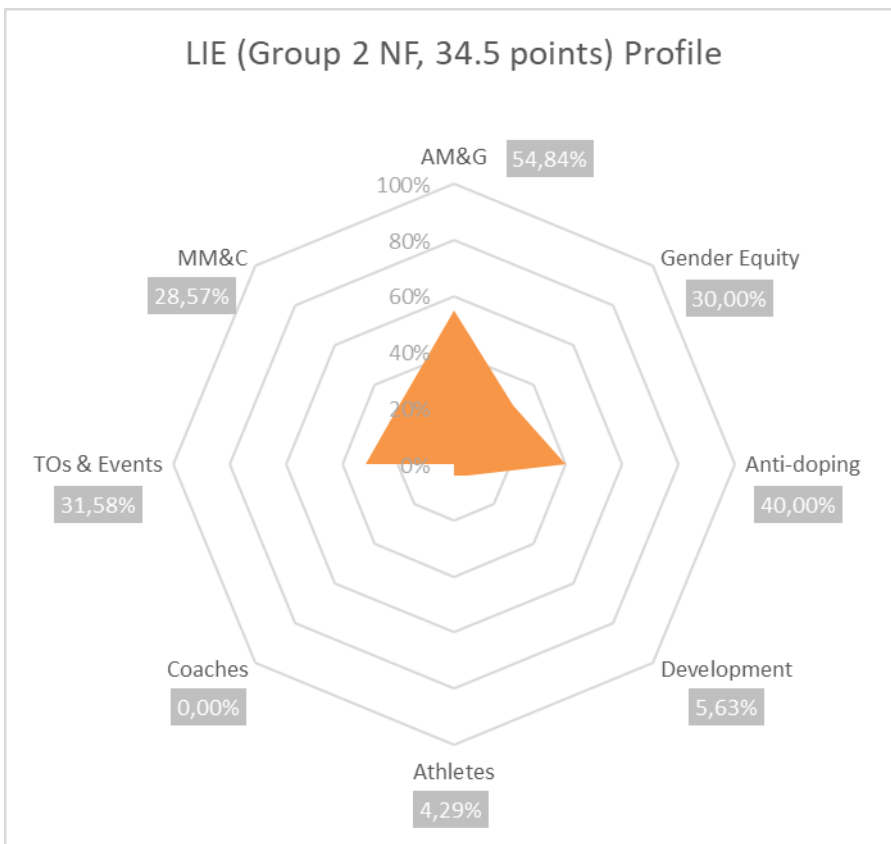
Assessed National Federation

Confederation:	ETU
National Federation:	Liechtenstein Triathlon Federation
In good standing status with ITU as per constitution (YES/NO) in 2018	No
2018 survey submission:	Using the on-line JotForm tool
Current National Federation Group based on the 2018 survey:	2
National Federation Overall Survey Score (2018):	34,5

National Federation Survey

Submitted by the NF Representative:	Philip E.C. Schädler President
Submission day:	22.01.2019

National Federation Profile Diagram



General Feedback

Administration Management & Governance

Survey result: **54,84%**

Gender Equity

Survey result: **30,00%**

Anti-Doping

Survey result: **40,00%**

Development

Survey result: **5,63%**

Athletes

Survey result: **4,29%**

Coaches

Survey result: **0,00%**

Technical Officials & Events

Survey result: **31,58%**

Marketing, Media & Communication

Survey result: **28,57%**

The National Federation is in the advanced phase of the establishment of the sport structure. Following the stabilisation of *Administration, Management and Governance* the next step would be to get involved in ETU Development Projects (for further reference see the 2019 ITU-ETU Development Agreement). We do encourage the NF to participate on ITU Annual Congress in order to get familiar with our procedures and projects, and also build rapport to other NFs and ITU.

Getting involved in the development work of ETU / ITU firstly requires identifying coaches, technical officials and event organisers who could and are willing to participate on relevant courses and seminars. A good start would be to host an ITU Activator Community Seminar in Lichtenstein in conjunction to the Triathlon National Championships. To increase the number of athletes the NF may establish and/or further develop a talent identification and youth program possibly linked to similar school initiatives and use the opportunities (for both coaches and athletes) of Continental Camps offered by ETU.

In the next phase the most important areas of development are *Athletes* and *Coaches*, then building on these fundamentals of participants the domain of *Development* and also *Technical Officials & Events*.

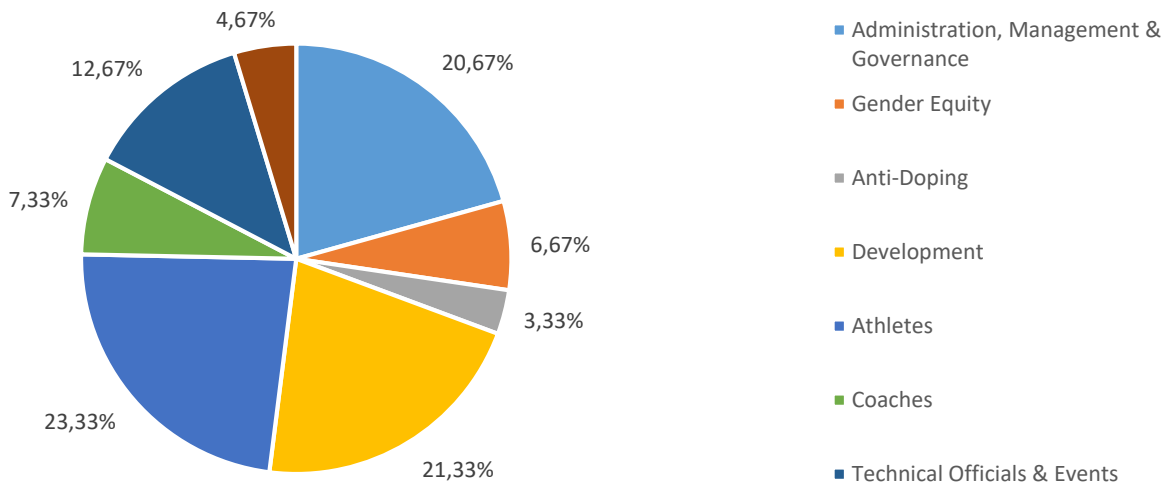
For detailed information and schedule of ITU Development Projects, please refer to <https://www.triathlon.org/development>.

Overview of the ITU National Federation (Classification²¹) Report 2018

1. INDICATORS

- 88 (58,7 %) survey-based and further 62 (41,3 %) historical indicators in 8 main areas:
 - o Administration, Management & Governance
 - o Gender Equity
 - o Anti-Doping
 - o Development
 - o Athletes
 - o Coaches
 - o Technical Officials & Events
 - o Marketing, Media, Communication
- The 8 main areas represent the following weights out of the 150 indicators in total:

Area	Number of indicators	Relative weight of indicators
Administration, Management & Governance	31	20,67 %
Gender Equity	10	6,67 %
Anti-Doping	5	3,33 %
Development ²²	32	21,33 %
Athletes ²³	35	23,33 %
Coaches	11	7,33 %
Technical Officials & Events	19	12,67 %
Marketing, Media, Communication	7	4,67 %
	150	100



²¹ The ITU Executive Board recommended to change the name of the report from “National Federation Classification Report” to “National Federation Report”, to avoid confusion with the Paratriathlon Classification.

²² Youth, Junior and U23 athlete data is included under Development.

²³ Elite and Age Group athlete data is included under Athletes.

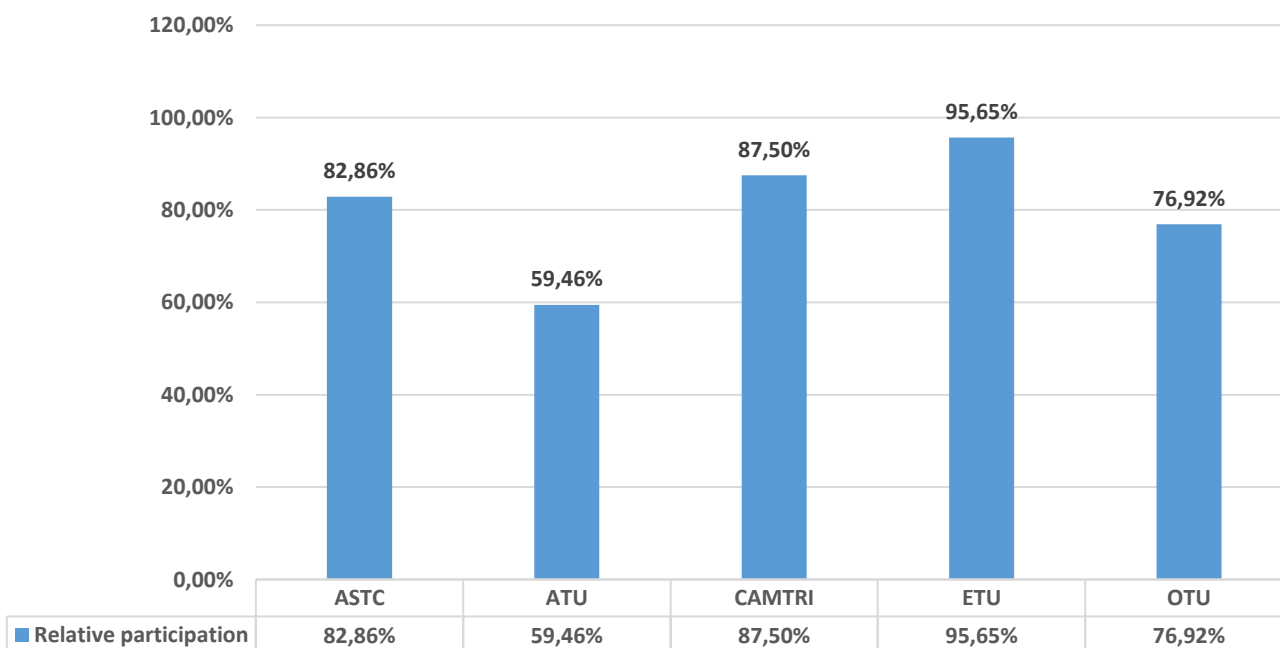
3. Two METHODS of data collection

- a. ITU National Federation Survey in 3 languages (English, Spanish, French) with an online (JotForm) and an offline version (excel)
 - i. First email by ITU President on the 21st December 2018.
 - ii. First reminder on the 14th January 2019.
 - iii. Continuous reminders and phone calls to non-responding National Federations in January, February & March 2019 (last submission received on 11th March 2019).
 - iv. The survey data collection cut-off date was 15th March.
- b. ITU Data Collection
 - i. From various ITU databases and the back-end (Technical Officials, Coaches, Facilitators, Paratriathlon Classifiers, Events, Results, etc.).

4. National Federation PARTICIPATION

As of now ITU has 171 affiliated National Federations on the five continents. In case of ETU Andorra, Bosnia and Herzegovina and Gibraltar are special NFs as they are not affiliated to their respective Continental Confederation.

<i>Continental Confederation</i>	Number of NFs	Number of participants	Relative participation
ASTC ²⁴	35	29	82,86 %
ATU	37	22	59,46 %
CAMTRI	40	35	87,50 %
ETU ²⁵	46	44	95,65 %
OTU	13	10	76,92 %
TOTAL	171	140	81,87 %



²⁴ Pakistan participated, but is suspended by ITU. Kuwait is suspended by ITU.

²⁵ Gibraltar participated but is not an ETU affiliated National Federation. Neither Andorra nor Bosnia and Herzegovina are affiliated to ETU.

5. ITU National Federation **GROUPS**

NF group	Description
1	Established National Federation
2	Established and functioning National Federation
3	Well established and functioning NF with Development Programs, Youth and Junior Continental Event participation
4	Developed NF, Structured Education Program, Continental Class Athletes in all ages
5	Developed with High Performance Programmes, World Class Athletes, ITU Accredited Education Systems, High Gender Equity, ITU Sanctioned Event Hosting

The below KPIs are strict requirements to achieve Group 5 ranking. If any of these KPIs is missed, the NF cannot get Group 5 recognition regardless the total number of points.

- In good standing with the International Triathlon Union (ITU)
- Minimum 20 % of female EB members
- ITU Accredited Coaches Education Programme (ACEP)
- ITU Accredited NF Technical Officials Education Programme (ATOEP)
- At least one continental or world class event's development

Please send your comments to ITU National Federation Services & Development at federations@triathlon.org until Wednesday 22nd May 2019. If there is no further submission from your National Federation, we consider the above National Federation Group as final. The report will be made public by the end of July 2019, prior to ITU Congress in Lausanne.